



DESIGNED AND MADE ACCORDING TO THE MOST HIGH QUALITY STANDARDS, WITH THE COMPONENTS OF THE BEST BRANDS. TUBULAR FRAMES, "U" PROFILES, TRUSS TUBULARS AND GALVANIZED ANGLE PROFILES.

STANDARD CONVEYOR BELTS



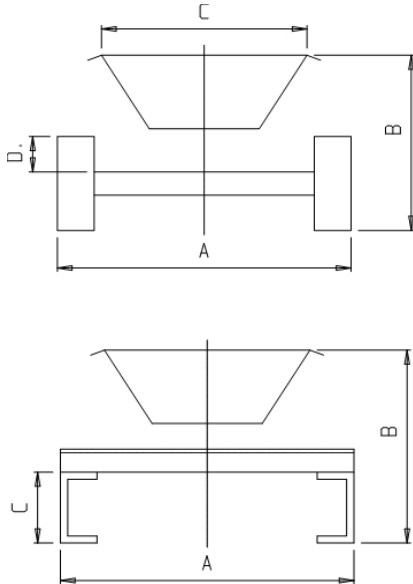
TECHNICAL FEATURES:

- Smooth / barbed nylon canvas belts coated with anti-abrasion rubber
- Tensioning with double stainless screws acting on the idle drum
- Upper stations in pairs or triples of rollers
- heavy type rollers branded Rulmeca on bearings lubricated for life
- Gearboxes branded Bonfiglioli
- Loading tray with easily replaceable clamped rubber bibs
- Electric motors of national production
- Convex drums (the driving drum is coated with anti-slip rubber)
- Protection scraper for the idle drum
- Special 3-sided rubber or widia plates scraper for the driving drum

OPTIONAL ACCESSORIES:

- Walkways and banisters, support structures, discharge chutes
- Belt cover
- Side and bottom protections
- Rope emergency devices
- Rotation control devices
- Material presence sensor
- Weighing scales
- Containment sides

CONVEYOR BELTS - STANDARD MODELS



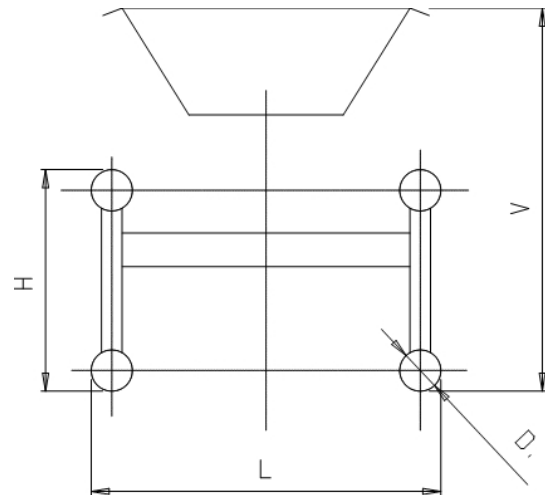
STANDARD SIZES FOR TUBULAR BELTS

| BELT | A | B | C | D |
|------|------|-----|-----|----|
| 40 B | 620 | 430 | 550 | 65 |
| 50 B | 750 | 450 | 650 | 65 |
| 65 B | 900 | 450 | 800 | 65 |
| 80 B | 1140 | 485 | 950 | 65 |

STANDARD SIZES FOR "U" PROFILE BELTS

| BELT | A | B | C |
|-------|------|-----|-----|
| 50 U | 810 | 595 | 120 |
| 65 U | 970 | 620 | 140 |
| 80 U | 1170 | 635 | 160 |
| 100 U | 1370 | 650 | 180 |

The models shown are standards that can be adapted and modified according to specific customer needs.



STANDARD SIZES FOR TUBULAR TRUSS BELTS

| BELT | L | H | D | V | |
|-------|------|------|----|------|-----|
| 50 L | 757 | 380 | 42 | 690 | 20° |
| 50 N | 775 | 380 | 60 | 690 | 20° |
| 50 M | 860 | 550 | 60 | 925 | 20° |
| 65 L | 920 | 380 | 42 | 690 | 20° |
| 65 N | 938 | 380 | 60 | 690 | 20° |
| 65 M | 1040 | 550 | 60 | 925 | 30° |
| 65 P | 1056 | 800 | 76 | 1160 | 30° |
| 65 E | 1069 | 1280 | 89 | 1550 | 30° |
| 80 L | 1112 | 380 | 42 | 690 | 20° |
| 80 N | 1130 | 380 | 60 | 690 | 20° |
| 80 M | 1224 | 550 | 60 | 925 | 30° |
| 80 P | 1240 | 800 | 76 | 1160 | 30° |
| 80 E | 1253 | 1280 | 89 | 1550 | 30° |
| 100 P | 1426 | 800 | 76 | 1160 | 30° |
| 100 E | 1439 | 1280 | 89 | 1550 | 30° |

